

# MONTHLY MEMBERSHIP PROGRESS REPORT

LOCATION NEW YORK

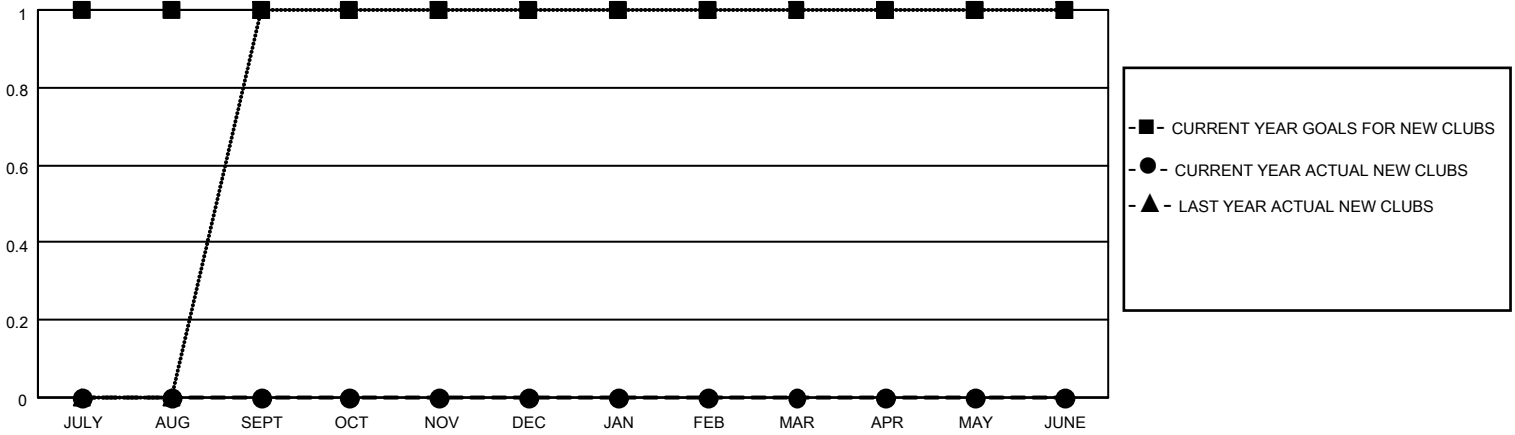
District 20 S

Results as of: 6/30/2022

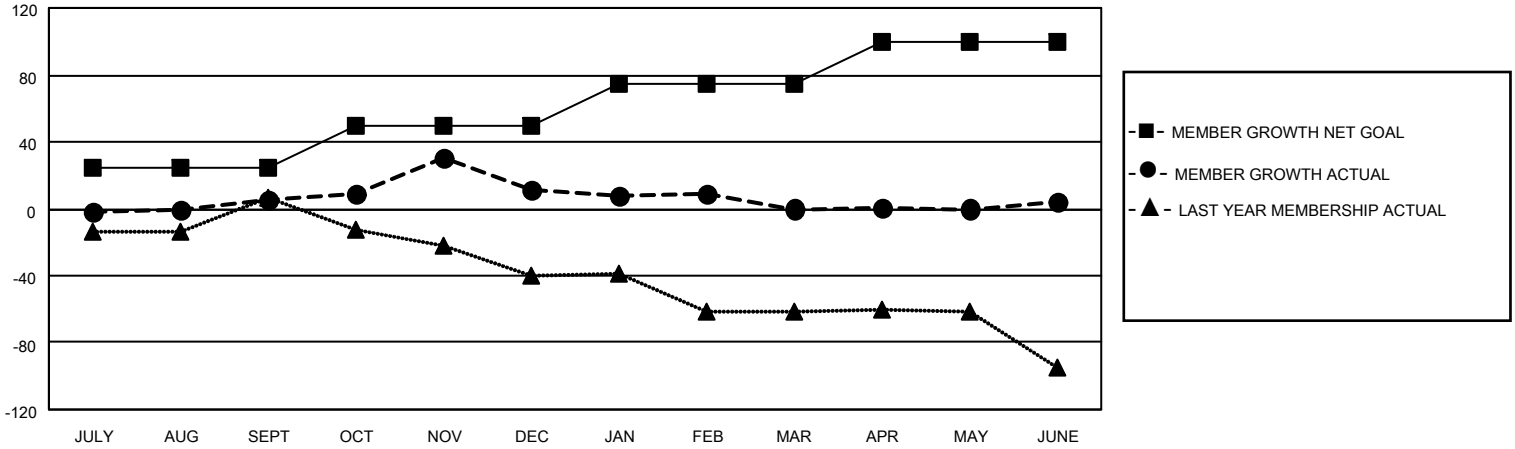
Clubs			
RESULTS FOR 2021-2022			
QUARTER	NEW CLUB GOAL	NEW CLUBS	DROPPED CLUBS
JULY/AUG/SEPT	1	0	0
OCT/NOV/DEC	0	0	0
JAN/FEB/MAR	0	0	1
APR/MAY/JUNE	0	0	0

Members			
RESULTS FOR 2021-2022			
QUARTER	MEMBER GROWTH NET GOAL	MEMBER GROWTH ACTUAL	DROPPED MEMBERS ACTUAL (including transfers)
JULY/AUG/SEPT	25	23	13
OCT/NOV/DEC	25	41	35
JAN/FEB/MAR	25	21	31
APR/MAY/JUNE	25	45	37

**GOALS AND ACTUAL NEW CLUBS CUMULATIVE**



**GOALS AND ACTUAL MEMBERS CUMULATIVE**



**DROPPED CLUBS: 1**

**27 CLUBS OF 44 ADDED 1 OR MORE NEW MEMBERS**

**GENDER DISTRIBUTION**

MALE	840 (67.31%)
FEMALE	408 (32.69%)
NON BINARY	0 (0.00%)
PREFER NOT TO ANSWER	0 (0.00%)

**DROPPED MEMBERS**

[CLICK HERE FOR CUMULATIVE MEMBERSHIP DATA](#)

DECEASED	11
CLUB CANCELLED	4
OTHER	101
<b>TOTAL</b>	<b>116</b>

TOTAL FAMILY UNIT MEMBERS	94
FAMILY MEMBERS PAYING HALF DUES	49